

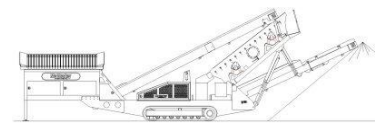
SPECIFICATIONS



McCloskey ***S130 3-Deck***

DISTRIBUTOR FOR AFRICA

8515 Baymeadows Way Suite 201
Jacksonville, FL 32256 – USA
+1 904 732 2151 sales@pioneerjax.com

**DESCRIPTION**

Heavy duty mobile Screener with following features:

- 14x5 heavy duty high energy 2 bearing 3 deck screenbox.
- 100Hp Cat engine.
- Track or wheel mobile.
- Integrated hydraulic folding stockpiling conveyors.
- 3 Deck auxiliary conveyor attaches to machine for one unit transport.
- Remote control tipping grid.
- Fast on site setup time – 10 minutes.

DIMENSIONS AND WEIGHTS**Length – transport**

(Please see last page)

12ft Hopper	15.61m (51' - 2")
15ft hopper	16.52m (54'2")
Width – transport	
500mm aux conv	3.060m (9' - 10")
650mm Aux conv.	3.24m (10'8")
Height - transport 3 deck track	3.45m (11' - 4")
Height - transport 3 deck wheel	3.73m (12' - 3")
Weight - track	29,000 Kgs (63,933 lbs) - estimated
Weight - wheel	25,000 Kgs (55,115 lbs) – estimated

CAPACITIES

Diesel tank capacity	399 L (105 US gal)
Hydraulic tank capacity	630 L (166 US Gals)
Capacity - 12ft hopper	8.01 m ³ (10.48 yd ³)

FEED CONVEYOR

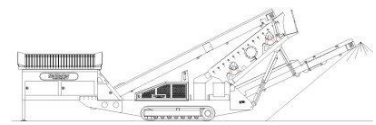
Belt width	1200mm (48")
Belt spec	Plain 500/3 6+3
Drive drum dia.	335mm (13.1")
Tail drum dia.	320mm (12.5")
Gearbox	Bonfig 805 W2
Gearbox ratio	24.2
Gearbox torque	7000Nm cont, 12500Nm max
Motor	Danfoss OMSS160
Flow rate	50.6 Lpm (13.4gpm)
Adjustable speed	YES - 13.1 rpm

MAIN CONVEYOR

Maximum Speed	115.2 rpm
Belt width	1050mm (42")
Belt spec Plain	400/3 6+1.5
Drive drum dia.	285mm (11.2")
Tail drum dia.	270mm (10.6")
Motor	Danfoss OVM630
Flow rate	72.6 Lpm (19.2gpm)
Adjustable speed	OPTION

DISTRIBUTOR FOR AFRICA

8515 Baymeadows Way Suite 201
Jacksonville, FL 32256 – USA
+1 904 732 2151 sales@pioneerjax.com

**TAIL CONVEYOR**

Stockpile height - track model	3871mm (12' - 8")
Stockpile height - wheel model	4139mm (13' - 7")
Belt width	1200mm (48")
Belt spec	Plain - 400/2 6+1.5
Drive drum dia.	285mm (11.2")
Tail drum dia.	270mm (10.6")
Motor	Danfoss OMT630
Flow rate	72.6 Lpm (19.2gpm)
Maximum speed	115.2 rpm

SIDE CONVEYOR

Stockpile height - track model	4600mm (15' - 1")
Stockpile height - wheel model	4870mm (15' - 11")
Belt width	650mm (26")
Belt spec	Chevron - 400/3 6+1.5
Drive drum dia.	285mm (11.2")
Tail drum dia.	270mm (10.6")
Motor	OMT400
Flow rate	50.6 Lpm (11.1 gpm)
Adjustable speed	YES
Maximum speed	126.5 rpm

3 DECK TRANSFER CONVEYOR

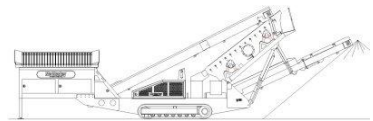
Belt width	650mm (26")
Belt spec Plain	400/3 4+2
Drive drum dia.	200mm (8")
Tail drum dia.	200mm (8")
Motor	OMT400
Flow rate	50.6 Lpm (11.1 gpm)
Adjustable speed	YES
Maximum speed	126.5 rpm

3 DECK AUXILLARY CONVEYOR

Stockpile height - track model	4700mm (15.5')
Belt width	650mm (26") Option 500mm (20")
Belt spec	Chevron - 400/3 6+1.5
Drive drum dia.	290mm (11.5")
Tail drum dia. (Spoked)	270mm (10.6")
Motor	OMT400
Flow rate	50.6 Lpm (11.1 gpm)
Adjustable speed	YES
Maximum speed	126.5 rpm

DISTRIBUTOR FOR AFRICA

8515 Baymeadows Way Suite 201
Jacksonville, FL 32256 – USA
+1 904 732 2151 sales@pioneerjax.com

**SCREENBOX**

Dimensions - top deck	4270mm x 1524mm (14' x 5')
Dimensions - middle deck	4270mm x 1524mm (14' x 5')
Dimensions - bottom deck	3660mm x 1524mm (12' x 5')
Bearing type 3 Deck	NSK/RHP 22319 - 95mm bore
Screens - top deck	5' x 4' side tension - 3 off & 5' x 2' side tension - 1 off
Screens - middle deck	5' x 4' side tension - 3 off & 5' x 2' side tension - 1 off
Screens - bottom deck	5' x 6' end tension - 2 off
Tensioning - top deck	Quick release pin and wedge
Tensioning - middle deck	Quick release pin and wedge
Tensioning - bottom deck	Curved tension bar and adjuster
Screen angle	25 to 34 deg
Screen motor	DBH MCC2208 (58.9cc/rev)
Drive system	Direct drive with HRC180 coupling
Hydraulic flowrate	72.6 Lpm (19.2gpm)
Speed adjustable	YES - Pressure compensated FCV
Screen stroke adjustable	6 - 10mm maximum
Screen shaft speed	1130 - 950 rpm
Screen 'g' force	4.29 - 5.05

POWERUNIT AND HYDRAULICS

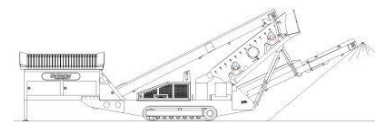
Engine	CAT 4.4 C DIT (Tier III)
Engine power	100 HP
Engine speed	2200 rpm
Flywheel Pump 1	DBH 5033,5033,5023
LH PTO Pump 2	DBH 5023,5023
RH PTO Pump 3	DBH 2SPA11
Total system flow	339 L (89.5 US Gpm)
Hydraulic tank capacity	630 L (166 US Gals)
Hydraulic tank ratio	1.85 : 1
Hydraulic Oil cooler	YES

ELECTRICS

Emergency stops	6 off, 1 feeder, 2 powerunit RH&LH, 2 Chassis front RH&LH, 1 Walkway
Chassis cabling	Armored cable
Start Siren	YES - 10 sec delay
Engine shutdowns:	Low oil pressure High water temp Air filter blockage (selectable) Fuel contamination Low hydraulic tank level
Engine room light	YES
Remote tipping grid	YES - 2 function timed
Radio control tracks	Optional - Hetric system
Pendant track control	YES - plugged in at feeder end

DISTRIBUTOR FOR AFRICA

8515 Baymeadows Way Suite 201
Jacksonville, FL 32256 – USA
+1 904 732 2151 sales@pioneerjax.com



TRACKS

Width	500mm (19.7")
Length	2920mm (9' - 7") crs
Height	739mm (29.4")
Gearbox	Bonfiglioli 707
Ratio	122:1
Motor	Rexroth 63
Speed max	1.32 Kph (0.82 Mph)
Flow rate	72.6 Lpm (19.2gpm)
Dual speed	TBC
Attachment to chassis	Bolt On for quick change

WHEELS

Width	2900mm (9' - 6")
Axle centers	1360mm (4' - 6")
Wheels	235/75/R17.5 dual
Axles	2 off
Brakes	YES
Spring suspension	YES
Mudguards	YES
Handbrake	OPTION
ABS	OPTION

OPTIONS

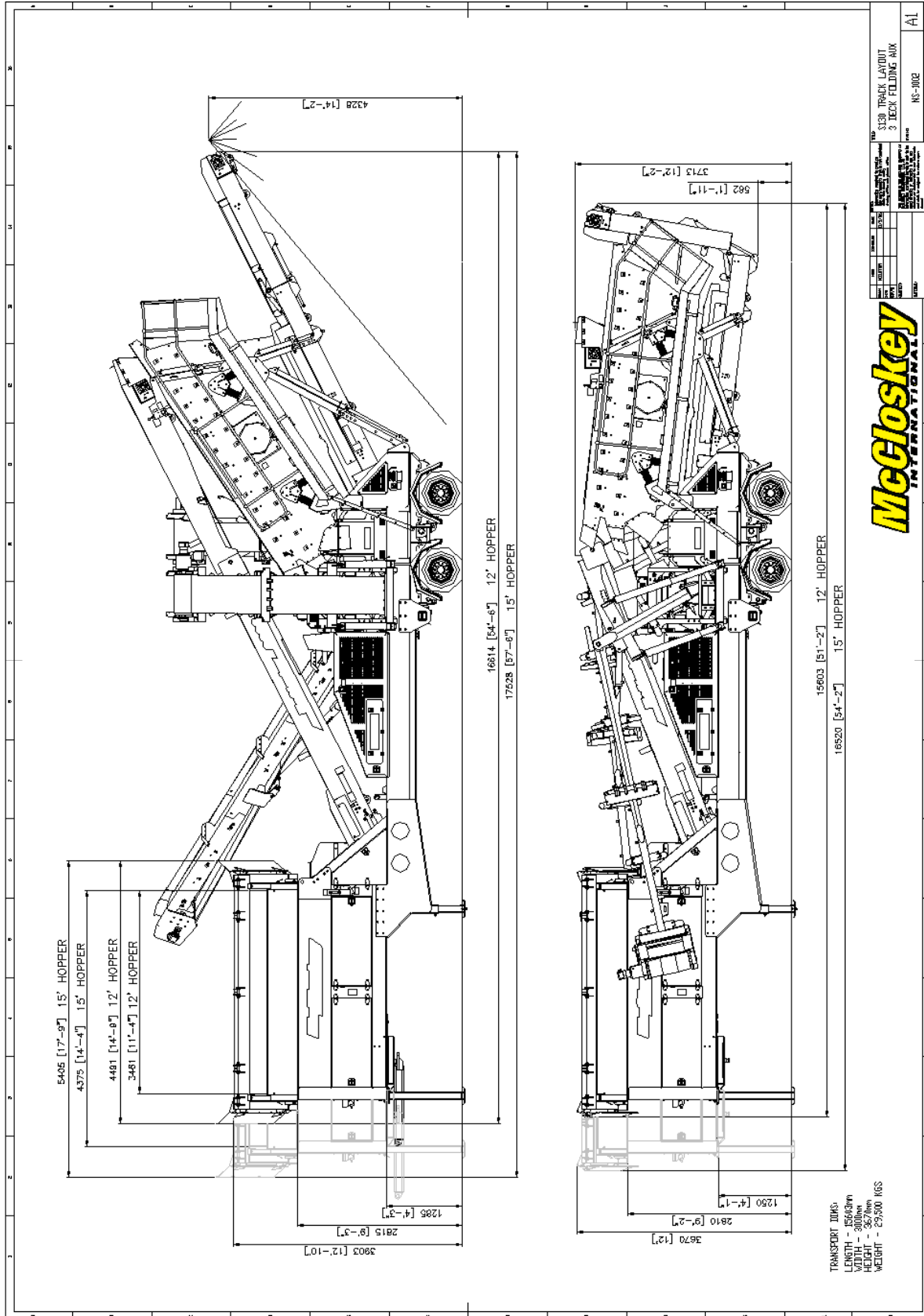
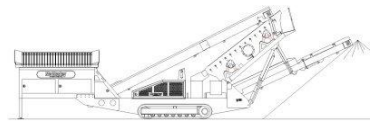
Single or double deck live head
Roll-in bogie system
Single shaft shredder
Rinsing system
Crusher chute (available with 15ft hopper only)
Radio remote control

SAFETY FEATURES

External belt alignment points
External grease points
Engine safety shutdown systems
Full safety guarding for nip points

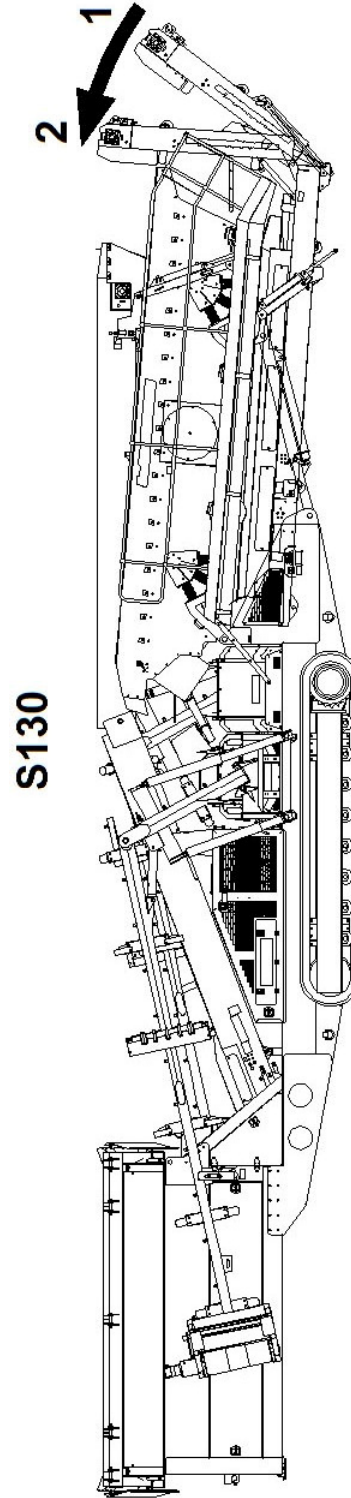
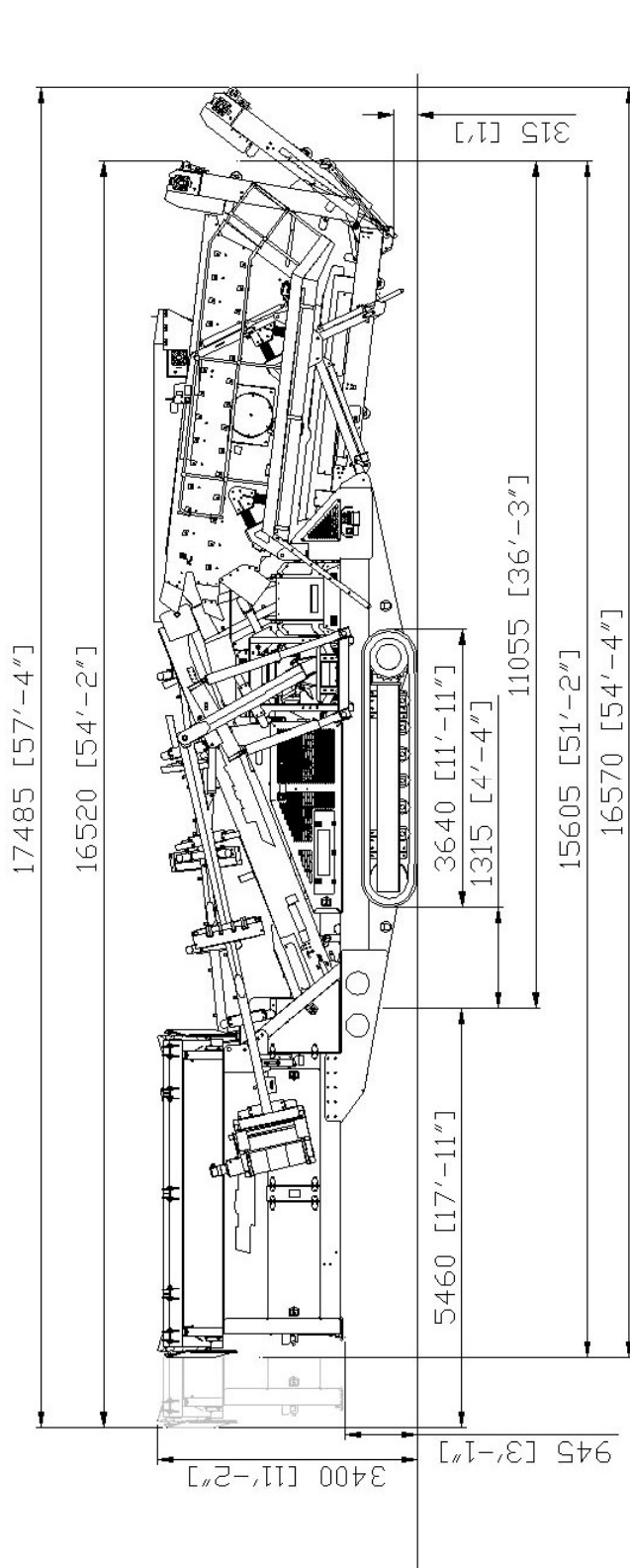
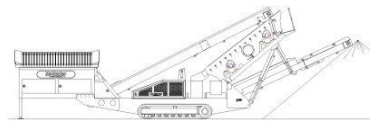
DISTRIBUTOR FOR AFRICA

8515 Baymeadows Way Suite 201
Jacksonville, FL 32256 – USA
+1 904 732 2151 sales@pioneerjax.com



DISTRIBUTOR FOR AFRICA

8515 Baymeadows Way Suite 201
 Jacksonville, FL 32256 – USA
 +1 904 732 2151 sales@pioneerjax.com



S130

POSITION 1 PREVENTS DAMAGE WHEN RAISING THE SCREENBOX

POSITION 2 IS THE MINIMUM LENGTH MACHINE CAN BE FOLDED TO

DISTRIBUTOR FOR AFRICA

8515 Baymeadows Way Suite 201
Jacksonville, FL 32256 – USA
+1 904 732 2151 sales@pioneerjax.com