

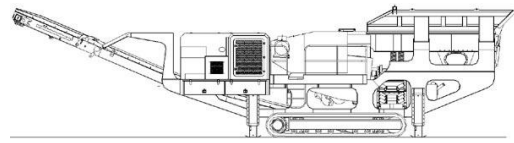
SPECIFICATIONS



McCloskey ***J40***

DISTRIBUTOR FOR AFRICA

8515 Baymeadows Way Suite 201
Jacksonville, FL 32256 – USA
+1 904 732 2151 sales@pioneerjax.com

**DESCRIPTION**

Heavy duty track mounted Crusher with following features:

- 1016 (40") x 610 (24") single toggle jaw.
- 225Hp C6.6 Cat engine.
- Track or Track c/w Wheel bogie.
- Integrated hydraulic folding hopper.
- Integrated hydraulic folding stockpiling conveyors.
- I-beam plate fabricated chassis construction.
- Large gap between crusher discharge and main conveyor feedboot
- Open chassis design for ease of maintenance
- Fast setup time

DIMENSIONS AND WEIGHTS

Length - working	13.69m (44' - 11")
Length - transport	13.78m (45' - 2.6")
Width - transport 2.5m	(8' - 2.5")
Height - transport	3.2m (10' - 6")
Weight	31,000 Kgs (68,343 lbs) with side conveyor, no magnet conveyor.

CAPACITIES

Diesel tank capacity	465 L (123 US gal)
Hydraulic tank capacity	1200 L (264 US Gals)

CRUSHING CHAMBER

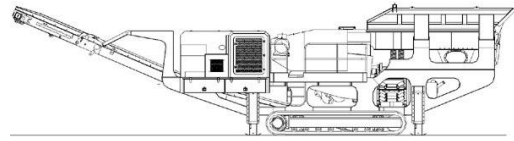
Feed opening	1016 (40") x 610 (24")
Crusher speed	300 rpm
Crusher Drive	Hydraulic - Banded V-Belts
Min. opening	51mm (2") *Note Applications
Max. opening	152mm (6")
Jaw weight	10,000Kgs
Closed side setting adjustment	Direct hydraulic ram adjust system
Motor	Kawasaki axial piston 280cc/rev
Flow rate	340 Lpm (89.8 US gpm)
Level sensor	Ultrasonic
Load sensor	Hydraulic

GRIZZLY FEEDER

Feeder width	950mm (37.4")
Feeder length	3700mm (12' - 1.6")
Drive	Hydraulic direct drive
Grizzly section opening	Tapered 40-61mm (1.5" - 2.5")
Grizzly section length	1550mm (61")
Motor	David Brown MCC 1911 51.8cc/rev
Flow rate	68.4 Lpm (18.1 US gpm)
Adjustable speed	Yes - via mechanical Flow Control
Variable speed	Yes - via electrical proportional
Maximum speed	977rpm

DISTRIBUTOR FOR AFRICA

8515 Baymeadows Way Suite 201
Jacksonville, FL 32256 - USA
+1 904 732 2151 sales@pioneerjax.com

**HOPPER**

Length	4180mm (13' – 8.5")
Width	2064mm (6' – 9")
Volume	5.4m ³ (7.4yd ³)
Material	8mm Hardox sides
Locking system	Wedge type and toggle

SIDE CONVEYOR

Stockpile height	2100mm (6' – 10.5")
Belt width	650mm (26")
Belt spec	EP 400/3 3+1.5
Drive drum dia.	220mm (8.6")
Tail drum dia.	220mm (8.6") - spoked
Motor	OMT400
Flow rate	43.7 Lpm (11.5 US gpm)
Adjustable speed	YES
Maximum speed	109 rpm

MAIN CONVEYOR

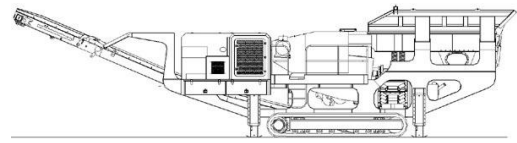
Stockpile height	3054mm (10')
Belt width	900mm (36")
Belt spec	Plain 500/3 8+2
Drive drum dia.	285mm (11.2")
Tail drum dia.	270mm (10.6") - spoked
Motor	OMV630
Flow rate	87.4 Lpm (23.1 US gpm)
Maximum speed	138.7 rpm
Angle adjustable	OPTION
Quick release	YES

POWERUNIT AND HYDRAULICS

Engine	CAT C6.6
Engine power	166 kW (225 HP)
Engine speed	1900 rpm
Flywheel Pump	1 Kawasaki K3V140DT (set at 83cc/rev)
LH PTO Pump 2	David Brown 5036 5023
Front PTO Pump 3	David Brown 5046 2SPA11
Total system flow	560.4 Lpm (148 US Gpm)
Hydraulic tank capacity	1200 L (317 US Gals)
Hydraulic tank ratio	2.14 : 1
Hydraulic Oil cooler	YES

DISTRIBUTOR FOR AFRICA

8515 Baymeadows Way Suite 201
Jacksonville, FL 32256 – USA
+1 904 732 2151 sales@pioneerjax.com



ELECTRICS

Emergency stops	4 off, 2 feeder, 2 powerunit
Chassis cabling	Armored cable
Start Siren	YES - 10 sec delay
Control panel	JMG
Engine shutdowns:	Low oil pressure
	High water temp
	Air filter blockage (selectable)
	Fuel contamination
	Low hydraulic tank level
	High hydraulic oil temperature
Radio control tracks	OPTION - Hetronic system
Pendant track control	YES - plugged in control cabinet

TRACKS

Width	400mm (15.7")
Length	2920mm (9' - 7") crs
Height	736mm (29")
Gearbox	Bonfiglioli 709
Ratio	122:1
Motor	Rexroth 63
Speed max	1.8 Kph (1.1 Mph)
Flow rate	100 Lpm (26.4 US gpm)
Attachment to chassis	Bolt On for quick change

OPTIONS

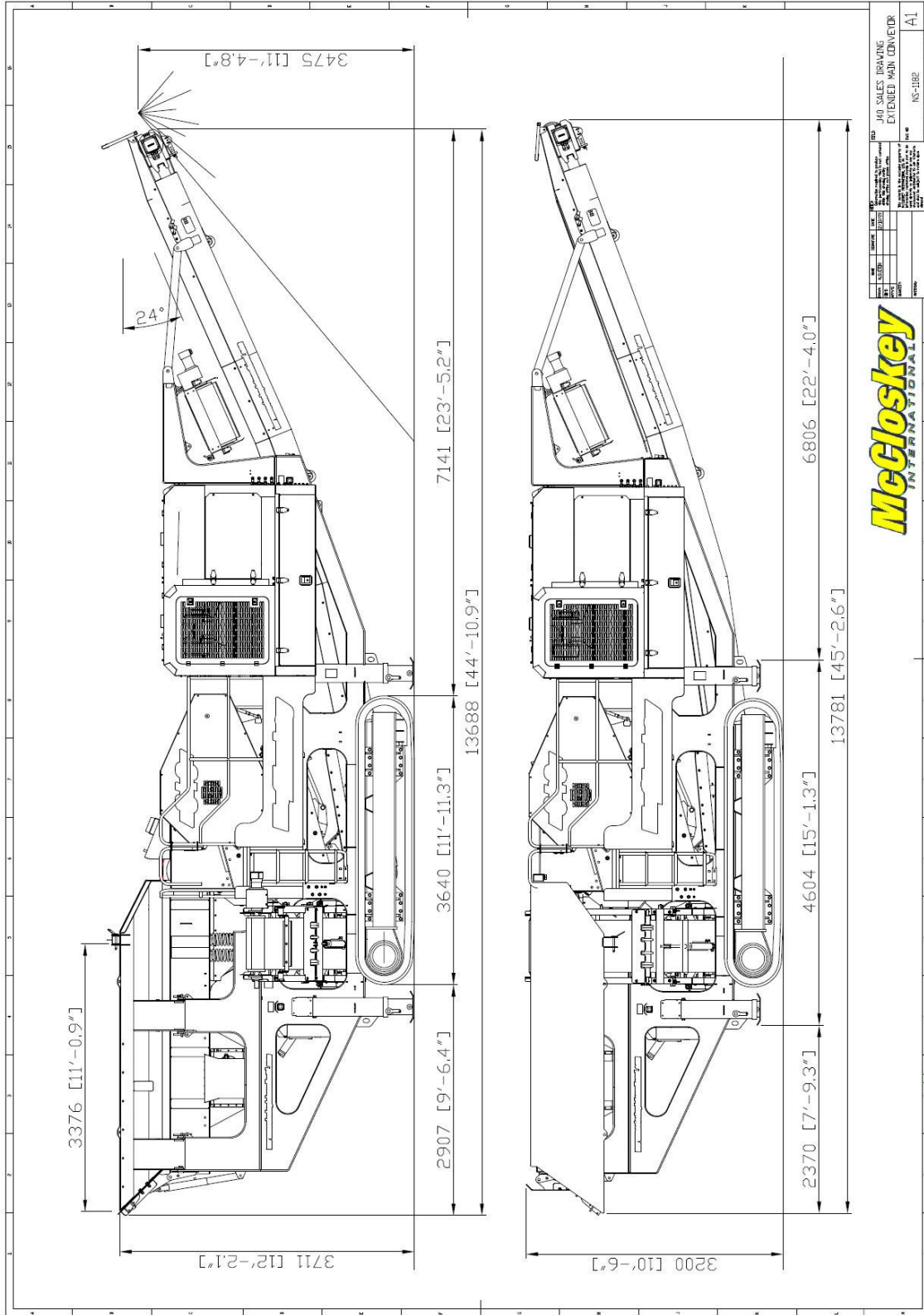
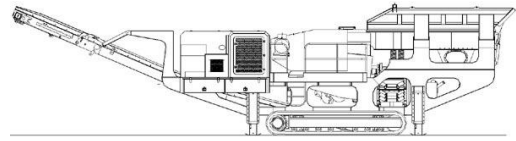
Roll-in bogie system	
Main conveyor variable speed control	
Interlock system	
Hopper Extensions	
Overband magnet	
Water Pump and dust suppression system	
Quarry or recycling jaw dies	
Crusher Deflector Plate – (Belt Protection)	STANDARD
Work lights	
Belt Scale	

SAFETY FEATURES

External belt alignment points
External grease points
Engine safety shutdown systems
Full safety guarding for nip points

DISTRIBUTOR FOR AFRICA

8515 Baymeadows Way Suite 201
Jacksonville, FL 32256 – USA
+1 904 732 2151 sales@pioneerjax.com



McCloskey
INTERNATIONAL

NO. 1	NO. 2	NO. 3	NO. 4	NO. 5	NO. 6	NO. 7	NO. 8	NO. 9	NO. 10
McCloskey International 140 SALES TRAINING EXTENDED TRAIN COURSE NS-1182 A1									

DISTRIBUTOR FOR AFRICA

8515 Baymeadows Way Suite 201
 Jacksonville, FL 32256 – USA
 +1 904 732 2151 sales@pioneerjax.com