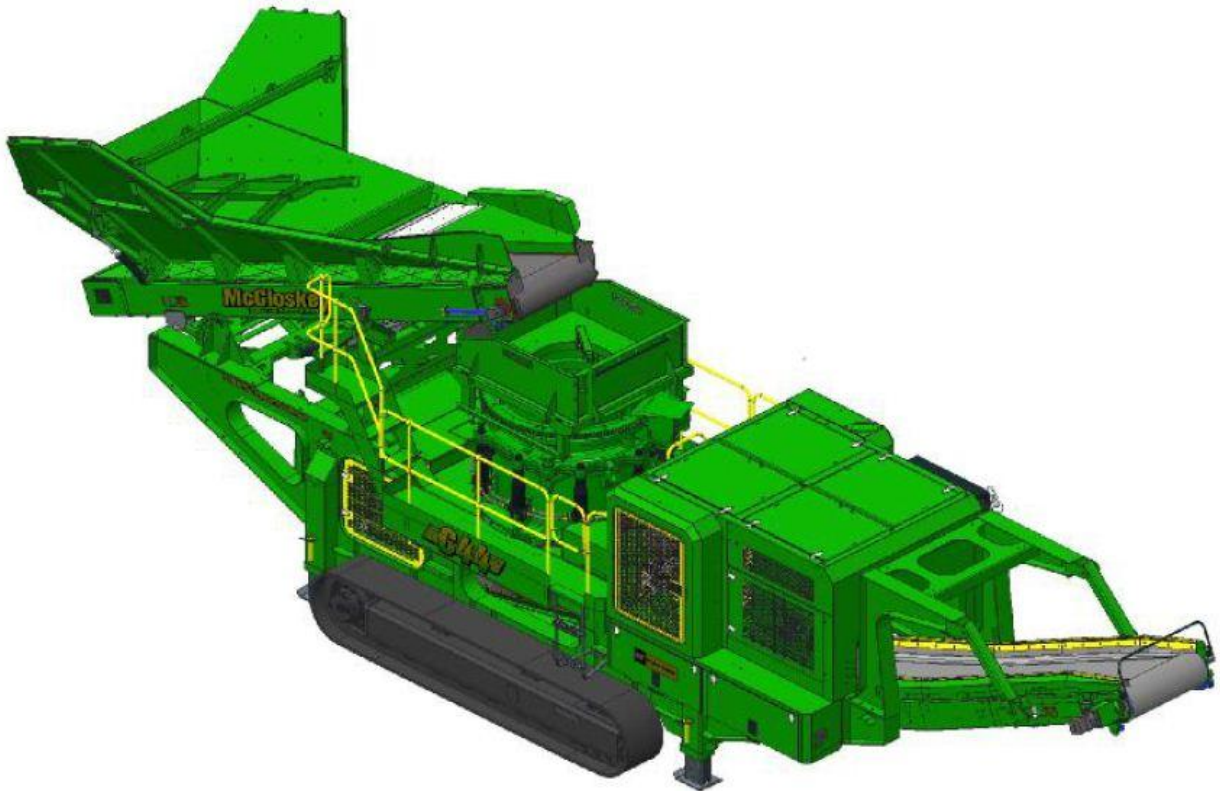




SPECIFICATIONS



McCloskey ***C44***

DISTRIBUTOR FOR AFRICA

8515 Baymeadows Way Suite 201
Jacksonville, FL 32256 – USA
+1 904 732 2151 sales@pioneerjax.com



DESCRIPTION

Heavy duty track mounted Crusher with following features:

- Telsmith 44SBS Cone c/w Anti spin system.
 - 440Hp C13 Cat engine.
 - Track or Track c/w Wheel bogie.
 - Integrated hopper with folding rear door.
 - I-beam plate fabricated chassis construction.
 - Large gap between crusher discharge and main conveyor feedboot
 - Open chassis design for ease of maintenance
- Fast setup time

DIMENSIONS AND WEIGHTS

Length - transport all models	16.02m (52' - 7")
Width - transport all models	2.9m (9' - 6")
Height - transport track	3.4m (11' - 2")
Weight - track	44,200 Kgs (97,444 lbs)

CAPACITIES

Diesel tank capacity	800 L (211 US gal)
Hydraulic tank capacity	1800 L (475 US Gals)

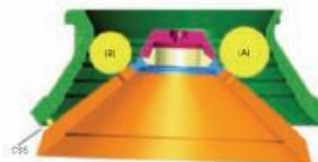
CRUSHING CHAMBER

Feed opening	914mm (36")
Crusher speed	672 rpm
Crusher Drive	Hydraulic – Direct drive
Min. opening	10mm (3/8") (Fine liner)
Max. opening	165mm (1 3/4") (Coarse Liner)
Cone weight	14,970kg (33,000 lbs)
Closed side setting adjustment	Hydraulic
Motor	Kawasaki axial piston 800cc/rev
Flow rate	608 Lpm (160 US gpm)
Level sensor	Ultrasonic

SBS CRUSHING CHAMBER



Typical "F" Arrangement



Typical "C" Arrangement

Model	Bowl	Recommended Minimum Closed Side Setting (CSS)		Feed Opening at Minimum Closed Side Setting			
				Open (A)		Closed (B)	
44 SBS	C- X-Coarse	1"	25 mm	8"	203 mm	5-1/2"	165 mm
	C- Coarse	3/4"	19 mm	5-7/8"	149 mm	4-1/4"	108 mm
	C- Medium	5/8"	16 mm	4-7/8"	124 mm	3-1/2"	89 mm
	F- Coarse	5/8"	16 mm	4-1/4"	108 mm	2-5/8"	67 mm
	F- Medium	1/2"	13 mm	3-3/4"	95 mm	2-1/4"	57 mm
	F- Fine	3/8"	10 mm	3-1/2"	89 mm	1-3/4"	44 mm

DISTRIBUTOR FOR AFRICA

8515 Baymeadows Way Suite 201
Jacksonville, FL 32256 – USA
+1 904 732 2151 sales@pioneerjax.com

**FEEDER**

Feeder opening width	800mm (31.5")
Feeder drum crs.	6000mm (19' 8.2")
Drive	Hydraulic
Feeder belt width	1050mm (42")
Motor	Danfoss OMSS 125
Gearbox	Bonfig 809 W2 23.6:1
Flow rate	87.4 Lpm (23.1 US gpm)
Adjustable speed	Yes
Maximum speed	29 rpm

HOPPER

Length	3780mm (12' - 4.9")
Width	2200mm (7' - 2")
Volume	5m ³ (6.5yd ³)
Material	6mm sides + 10mm hardox liners

MAIN CONVEYOR

Stockpile height	3250mm (10' - 8")
Belt width	1050mm (42")
Belt spec	Plain 500/3 8+2
Drive drum dia.	350mm (13.7")
Tail drum dia.	270mm (10.6")
Motor	OMV630
Flow rate	68.4 Lpm (18.1 US gpm)
Maximum speed	108.5 rpm
Angle adjustable	YES
Quick release	YES

POWERUNIT AND HYDRAULICS

Engine	CAT C13
Engine power	328 kW (440 HP)
Engine speed	1900 rpm
Flywheel Pump 1	Kawasaki K5V160DP
LH PTO Pump 2	David Brown 5036 5023
RH PTO Pump 3	Pump 4045 011
Total system flow	798.4 Lpm (211 US Gpm)
Hydraulic tank capacity	1800 L (475 US Gals)
Hydraulic tank ratio	2.25 : 1
Hydraulic Oil cooler	2 off

DISTRIBUTOR FOR AFRICA

8515 Baymeadows Way Suite 201
Jacksonville, FL 32256 - USA
+1 904 732 2151 sales@pioneerjax.com



ELECTRICS

Emergency stops	4 off, 2 feeder, 2 powerunit
Chassis cabling	Armored cable
Start Siren	YES - 10 sec delay
Control panel	Tedd Engineering / IFM
Engine shutdowns:	Low oil pressure
	High water temp
	Air filter blockage (selectable)
	Fuel contamination
	Low hydraulic tank level
	High hydraulic oil temperature
Radio control tracks	Optional
Pendant track control	YES - plugged in control cabinet

TRACKS

Width	500mm (19.7")
Length	3800mm (12' - 6") crs
Height	798mm (31.4")
Gearbox	Bonfiglioli 711
Ratio	153:1
Motor	Rexroth 90
Speed max	1.50 Kph (0.93 Mph)
Flow rate	138 Lpm (36.45 US gpm)
Dual speed	Variable high speed system
Attachment to chassis	Bolt On for quick change

OPTIONS

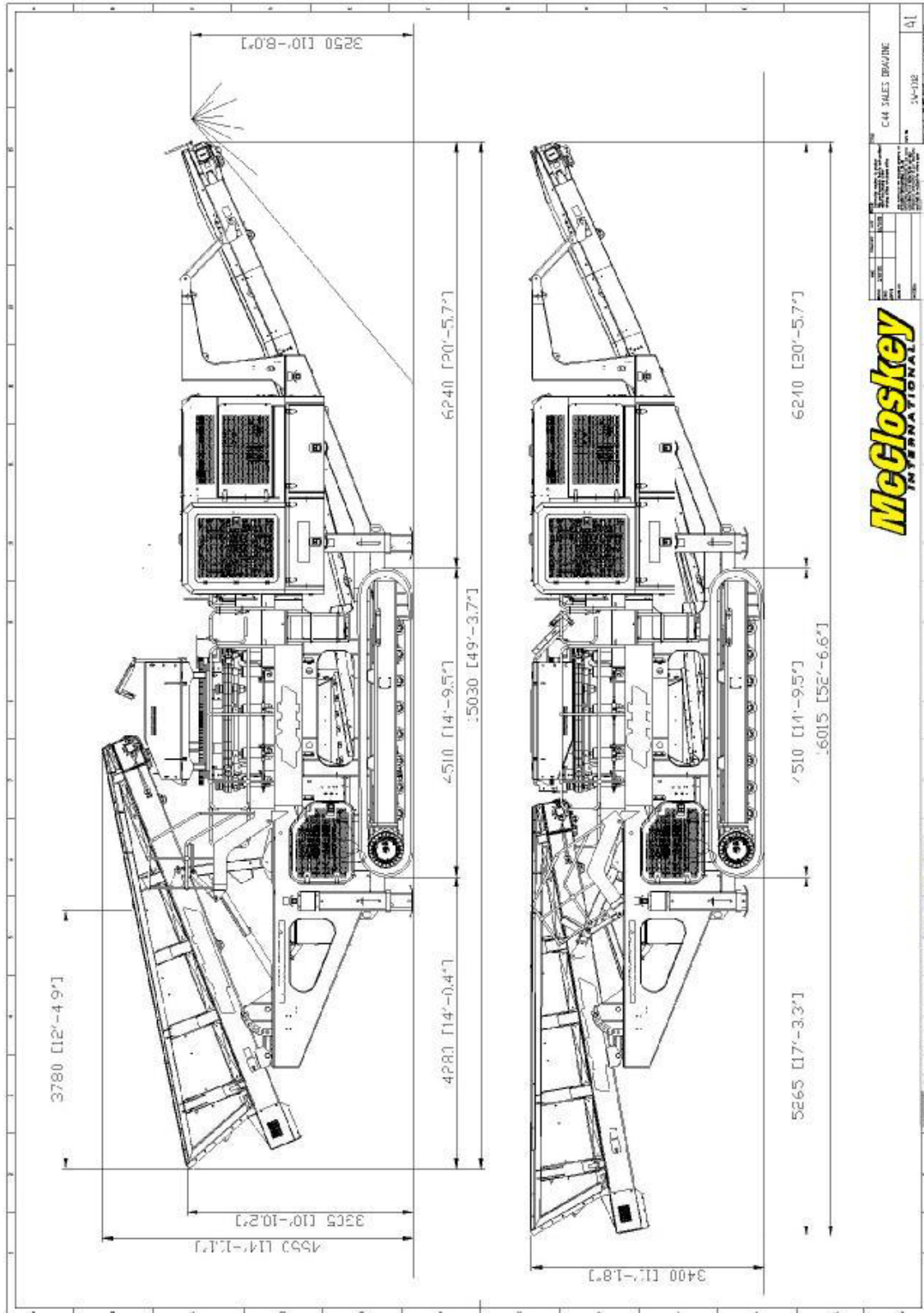
Roll-in bogie system
Main conveyor variable speed control
Interlock system
Hopper Extensions
Water Pump and dust suppression system
Coarse, Medium or Fine liners
Work lights
Belt scale

SAFETY FEATURES

External belt alignment points
External grease points
Engine safety shutdown systems
Full safety guarding for nip points
Hydraulic oil temp sensor
Fuel level sensor
Return filter sensor

DISTRIBUTOR FOR AFRICA

8515 Baymeadows Way Suite 201
Jacksonville, FL 32256 – USA
+1 904 732 2151 sales@pioneerjax.com



DISTRIBUTOR FOR AFRICA

8515 Baymeadows Way Suite 201
 Jacksonville, FL 32256 – USA
 +1 904 732 2151 sales@pioneerjax.com