

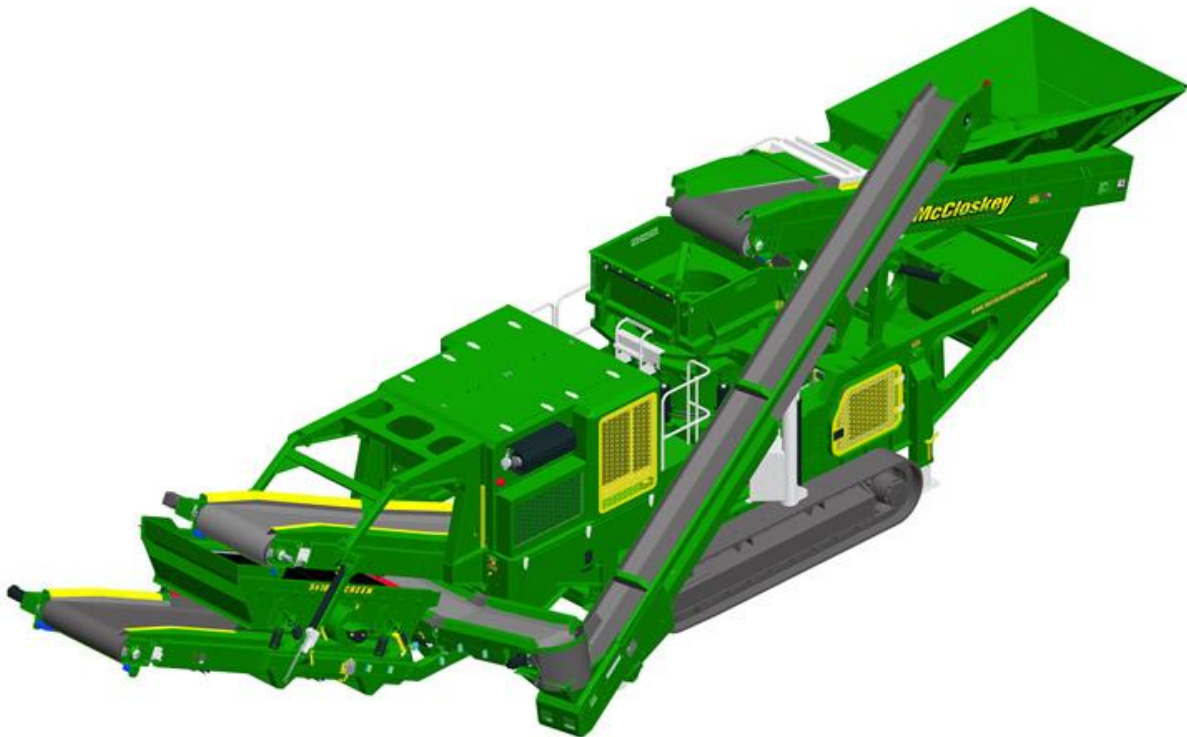
**McCloskey**  
INTERNATIONAL

**C38R**

Sept. 2013, issue 003



# ***SPECIFICATIONS***



## ***McCloskey*** ***C38R***

***DISTRIBUTOR FOR AFRICA***

8515 Baymeadows Way Suite 201  
Jacksonville, FL 32256 – USA  
+1 904 732 2151 [sales@pioneerjax.com](mailto:sales@pioneerjax.com)





## DESCRIPTION

Heavy duty track mounted Crusher with following features:

- Telsmith 38SBS Cone c/w Anti spin system.
  - 350Hp C9 Cat engine.
  - Track or Track c/w Wheel bogie.
  - 10x5 single deck recirculation screen
  - Integrated hopper with folding rear door.
  - I-beam plate fabricated chassis construction.
  - Large gap between crusher discharge and main conveyor feedboot
  - Open chassis design for ease of maintenance
- Fast setup time

## DIMENSIONS AND WEIGHTS

Length - transport all models 17.29m (56' - 8.7")

Width - transport all models 3.08m (10' - 1")

Height - transport track 3.4m (11' - 2")

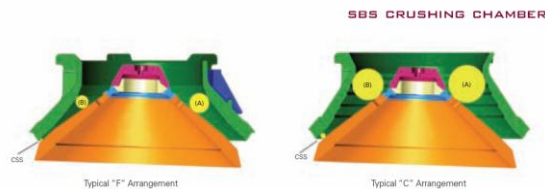
Weight - track 45,495 Kgs (100,300,050 lbs) *estimated*

## CAPACITIES

Diesel tank capacity 635 L (168 US gal)  
Hydraulic tank capacity 1200 L (315 US Gals)

## CRUSHING CHAMBER

Feed opening	914mm (36")
Crusher speed	672 rpm
Crusher Drive	Hydraulic – Direct drive
Min. opening	10mm (3/8") (Fine liner)
Max. opening	146mm (5 3/4") (Coarse Liner)
Cone weight	13,789kg (30,400 lbs)
Closed side setting adjustment	Hydraulic
Motor	Kawasaki axial piston 530cc/rev
Flow rate	440 Lpm (116.2 US gpm)
Level sensor	Ultrasonic



Model	Bowl	Recommended Minimum Closed Side Setting (CSS)		Feed Opening at Minimum Closed Side Setting			
				Open (A)		Closed (B)	
38 SBS	C- X-Coarse	1"	25 mm	6-7/8"	175 mm	5-3/4"	146 mm
	C- Coarse	5/8"	16 mm	5-1/4"	133 mm	3-7/8"	98 mm
	C- Medium	5/8"	16 mm	4-3/4"	121 mm	3-3/8"	86 mm
	F- Coarse	5/8"	16 mm	4-1/4"	108 mm	2-7/8"	73 mm
	F- Medium	1/2"	13 mm	3-3/4"	95 mm	2-1/4"	57 mm
	F- Fine	3/8"	10 mm	3-1/4"	83 mm	1-3/4"	44 mm

## DISTRIBUTOR FOR AFRICA

8515 Baymeadows Way Suite 201  
Jacksonville, FL 32256 – USA  
+1 904 732 2151 [sales@pioneerjax.com](mailto:sales@pioneerjax.com)

**FEEDER**

Feeder opening width	800mm (31.5")
Feeder drum crs.	5700mm (18' 8")
Drive	Hydraulic
Feeder belt width	1050mm (42")
Motor	Danfoss OMSS 160
Gearbox	Bonfig 809 W2 23.6:1
Flow rate	60.8 Lpm (16.1 US gpm)
Adjustable speed	Yes
Maximum speed	16 rpm

**HOPPER**

Length	3640mm (11' - 11")
Width	2200mm (7' - 2")
Volume	5m <sup>3</sup> (6.5yd <sup>3</sup> )
Material	6mm sides + 10mm Hardox liners

**MAIN CONVEYOR**

Belt width	1050mm (42")
Belt spec	Plain 500/3 8+2
Drive drum dia.	350mm (13.7")
Tail drum dia.	270mm (10.6")
Motor	OMV630
Flow rate	87.4 Lpm (23.1 US gpm)
Maximum speed	138.7 rpm
Angle adjustable	YES
Quick release	YES

**FINES CONVEYOR**

Stockpile height	2965mm (9' - 9")
Belt width	1200mm (48")
Belt spec	Plain 500/3 8+2
Drive drum dia.	285mm (11.2")
Tail drum dia.	270mm (10.6") - spoked
Motor	OMV630
Flow rate	68.4 Lpm (18.1 US gpm)
Maximum speed	108.6 rpm
Angle adjustable	NO
Quick release	YES

**DISTRIBUTOR FOR AFRICA**

8515 Baymeadows Way Suite 201  
Jacksonville, FL 32256 – USA  
+1 904 732 2151 [sales@pioneerjax.com](mailto:sales@pioneerjax.com)

**SCREENBOX**

Dimensions - top deck	3050mm x 1525mm (10' x 5')
Bearing type 2 Deck	NSK/RHP 22219
Screens - top deck	5' x 4' side tension - 2 off & 5' x 2' side tension - 1 off
Tensioning - top deck	Quick release pin and wedge
Screen angle	25 deg
Screen motor	DBH MCC2208 (59cc/rev)
Drive system	Direct drive with HRC150 coupling
Hydraulic flowrate	68.4 Lpm (18.1 US gpm)
Speed adjustable	YES - Pressure compensated FCV
Screen stroke adjustable	8 - 10mm
Screen shaft speed	970 rpm
Screen 'g' force	5.05

**TRANSFER CONVEYOR**

Belt width	650mm (26")
Belt spec	Plain 400/3 4+2
Drive drum dia.	200mm (8")
Tail drum dia.	200mm (8")
Motor	OMT400
Flow rate	43.7 Lpm (11.5 US gpm)
Adjustable speed	YES
Maximum speed	109.5 rpm

**RETURN CONVEYOR**

Belt width	500mm (20")
Belt spec	Chevron - 400/3 6+1.5
Drive drum dia.	290mm (11.5")
Tail drum dia. (Spoked)	270mm (10.6")
Motor	OMT400
Flow rate	43.7 Lpm (11.5 US gpm)
Adjustable speed	YES
Maximum speed	109.5 rpm

**DISTRIBUTOR FOR AFRICA**

8515 Baymeadows Way Suite 201  
Jacksonville, FL 32256 – USA  
+1 904 732 2151 [sales@pioneerjax.com](mailto:sales@pioneerjax.com)

**POWERUNIT AND HYDRAULICS**

Engine	CAT C9
Engine power	261 kW (350 HP)
Engine speed	1900 rpm
Flywheel Pump 1	Kawasaki K3V140DTP
LH PTO Pump 2	Turolla 33/23/10
RH PTO Pump 3	David Brown 5046
Kawasaki PTO	David Brown 5036 5023
Total system flow	764.9 Lpm (202.1 US Gpm)
Hydraulic tank capacity	1200 L (317 US Gals)
Hydraulic tank ratio	1.57 : 1
Hydraulic Oil cooler	YES

**ELECTRICS**

Emergency stops	4 off, 2 feeder, 2 powerunit
Chassis cabling	Armored cable
Start Siren	YES - 10 sec delay
Control panel	Tedd Engineering / IFM
Engine shutdowns:	Low oil pressure High water temp Air filter blockage (selectable) Fuel contamination Low hydraulic tank level
Radio control tracks	Optional
Pendant track control	YES - plugged in control cabinet

**TRACKS**

Width	400mm (12.7")
Length	3400mm (11' - 2") crs
Height	817mm (32")
Gearbox	O&K F55
Ratio	148:1
Motor	Integrated 90cc/rev
Speed max	1.50 Kph (0.93 Mph)
Flow rate	138 Lpm (36.45 US gpm)
Dual speed	Variable high speed system
Attachment to chassis	Bolt On for quick change

**DISTRIBUTOR FOR AFRICA**

8515 Baymeadows Way Suite 201  
Jacksonville, FL 32256 – USA  
+1 904 732 2151 [sales@pioneerjax.com](mailto:sales@pioneerjax.com)



### **OPTIONS**

Roll-in bogie system  
Main conveyor variable speed control  
Hopper Extensions  
Water Pump and dust suppression system  
Coarse, Medium and Fine liners  
Work lights  
Fueling Pump

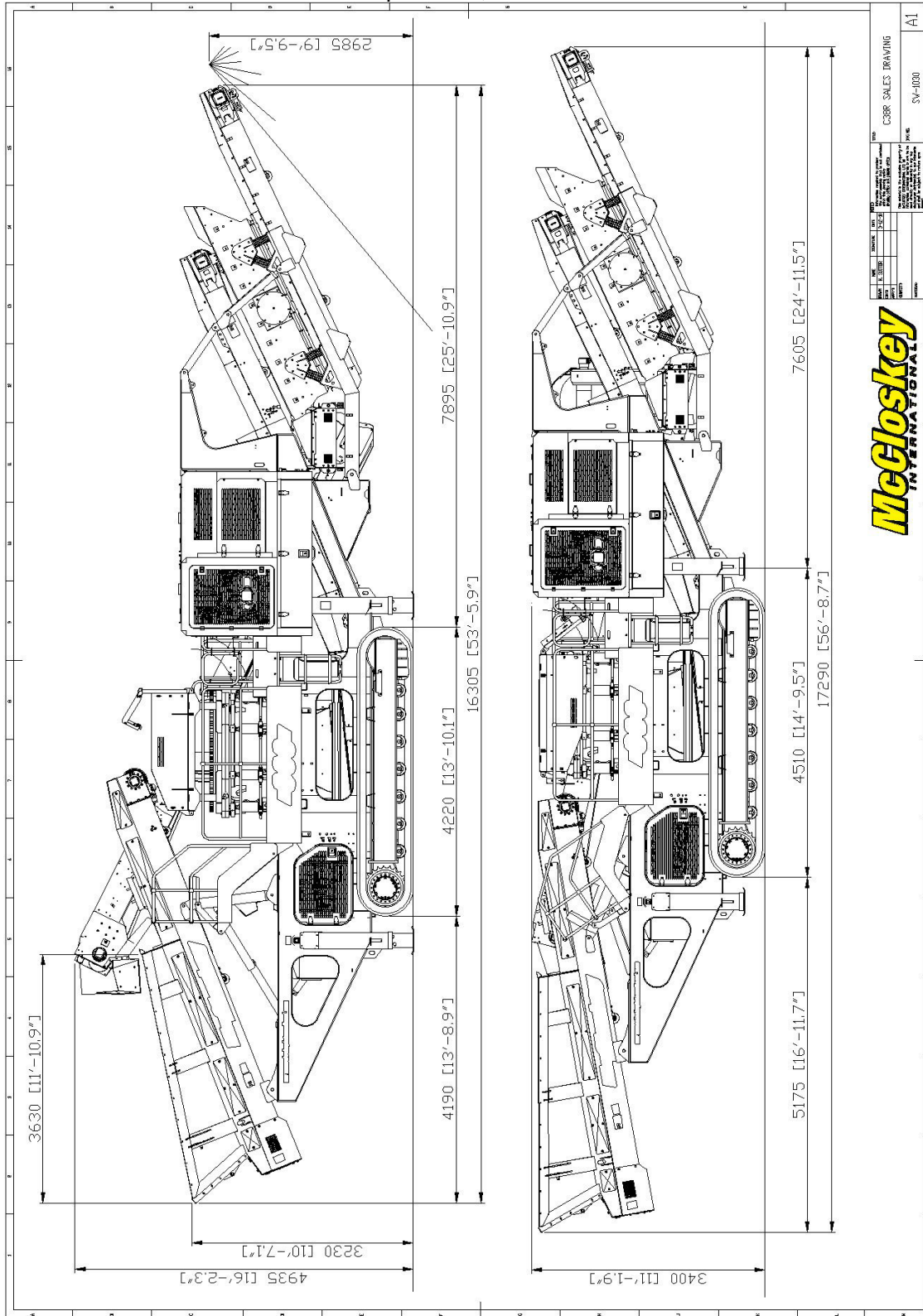
### **SAFETY FEATURES**

External belt alignment points  
External grease points  
Engine safety shutdown systems  
Full safety guarding for nip points  
Hydraulic oil temp sensor  
Fuel level sensor  
Return filter sensor

#### **DISTRIBUTOR FOR AFRICA**

8515 Baymeadows Way Suite 201  
Jacksonville, FL 32256 – USA  
+1 904 732 2151 [sales@pioneerjax.com](mailto:sales@pioneerjax.com)





**DISTRIBUTOR FOR AFRICA**  
 8515 Baymeadows Way Suite 201  
 Jacksonville, FL 32256 – USA  
 +1 904 732 2151 [sales@pioneerjax.com](mailto:sales@pioneerjax.com)

